



# Madera County Department of Public Health

## **Madera County**

### Suicidal Deaths Report: 2017-2018



# Introduction

- **Healthy People 2020**
  - Nationwide Science-based program designed by the US DHHS to determine health priorities and objectives to meet 10-year plan goals to improve health of Americans
- **Health People 2020 Target (10% improvement)**
  - Reduce suicidal rate: 10.2 suicides per 100,000 population
  - Reduce suicide attempts by adolescents: 1.7 suicide attempts per 100 population
- **Age-adjusted US Suicide Rate 2016**
  - 13.5 per 100,000 population
- **Age-adjusted CA Suicide Rate 2016**
  - 10.5 per 100,000 population

2008–2010, Age-Adjusted Suicide Rates by Region

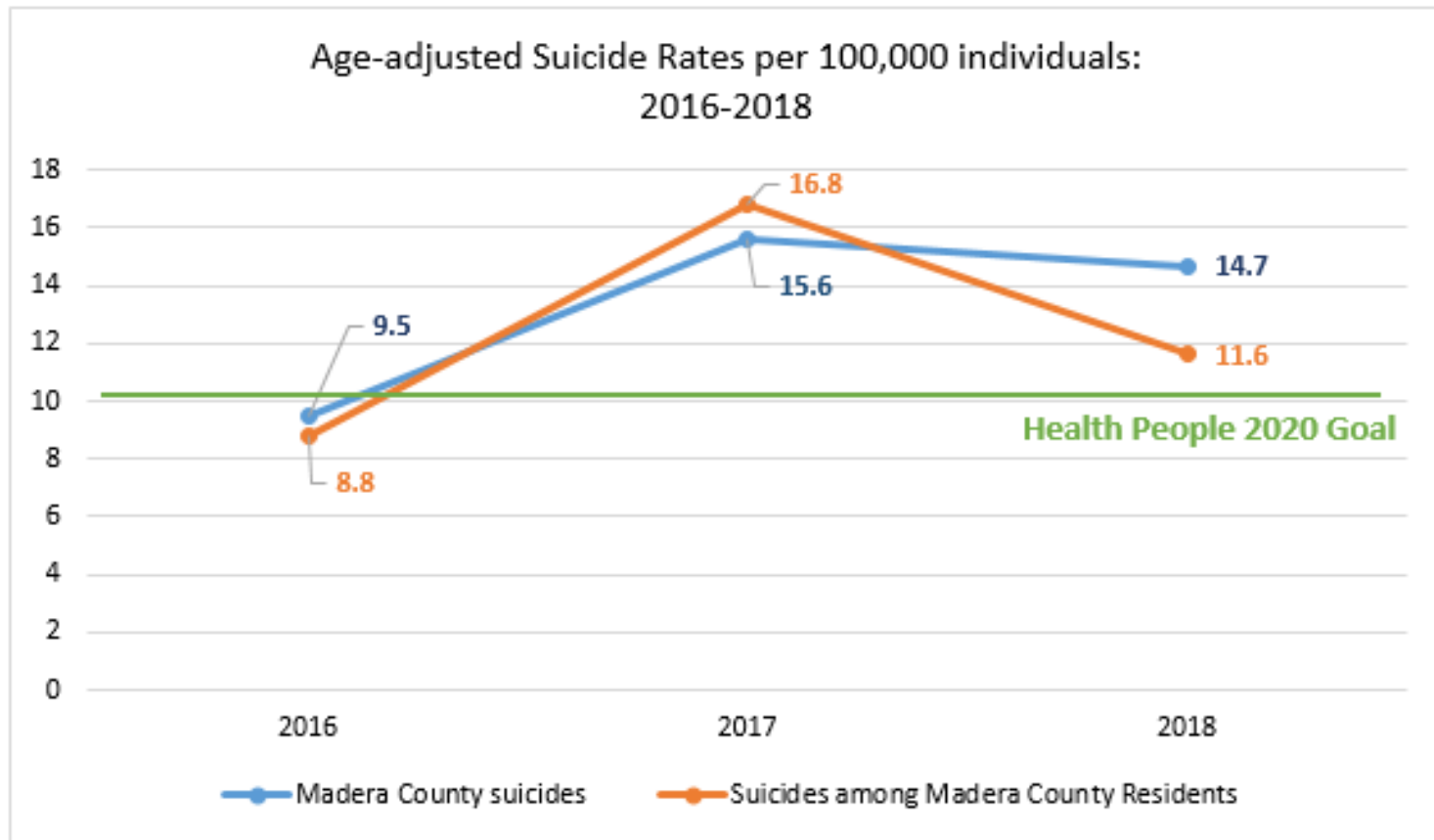


# Suicide Rates in Madera County

- **2017** (24 suicides in Madera County; 25 suicides among Madera County residents)
  - Age-adjusted suicide rate (occurring in Madera County)
    - 15.6 per 100,000 population
  - Age-adjusted Suicide rate (among Madera County Residents)
    - 16.8 per 100,000 population
- **2018** (22 suicides in Madera County; 18 suicides among Madera County residents)
  - Age-adjusted suicide rate (occurring in Madera County)
    - 14.7 per 100,000 population
  - Age-adjusted Suicide rate (among Madera County Residents)
    - 11.6 per 100,000 population



# Madera County Suicide Trends: 2016-2018

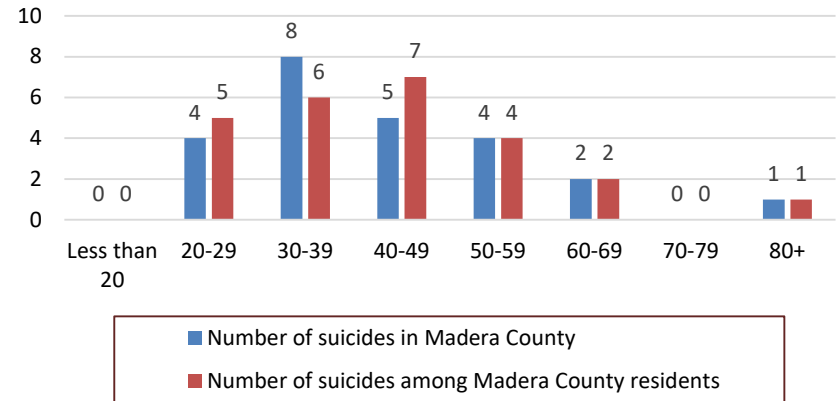


Lead. Protect. Empower.

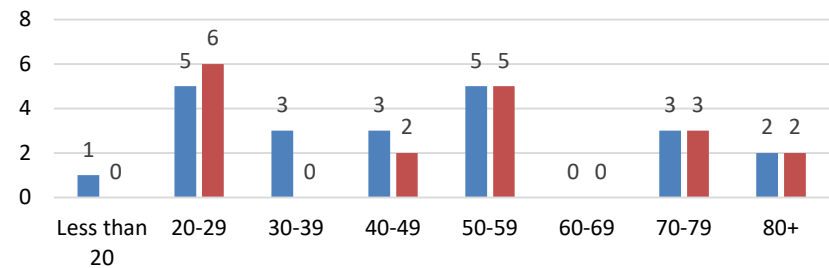
# Suicide Counts by Age

Age groups	2017		2018	
	Number of suicides in Madera County (%); N= 24	Number of suicides among Madera County residents (%); N=25	Number of suicides in Madera County (%); N=22	Number of suicides among Madera County residents (%); N=18
Less than 20	0	0	1 (5%)	0
20-29	4 (17%)	5 (20%)	5 (22%)	6 (33%)
30-39	8 (33%)	6 (24%)	3 (14%)	0
40-49	5 (21%)	7 (28%)	3 (14%)	2 (11%)
50-59	4 (17%)	4 (16%)	5 (22%)	5 (18%)
60-69	2 (8%)	2 (8%)	0	0
70-79	0	0	3 (14%)	3 (17%)
80+	1 (4%)	1 (4%)	2 (9%)	2 (11%)

Suicides by Age - **2017**



Suicides by Age - **2018**



# Suicide Counts by Sex

Sex	2017		2018	
	Number of suicides in Madera County; N= 24	Number of suicides among Madera County residents; N=25	Number of suicides in Madera County; N=22	Number of suicides among Madera County residents; N=18
Female	5 (21%)	5 (20%)	5 (23%)	2 (11%)
Male	19 (79%)	20 (80%)	17 (77%)	16 (89%)



# Suicide Counts by Race/Ethnicity

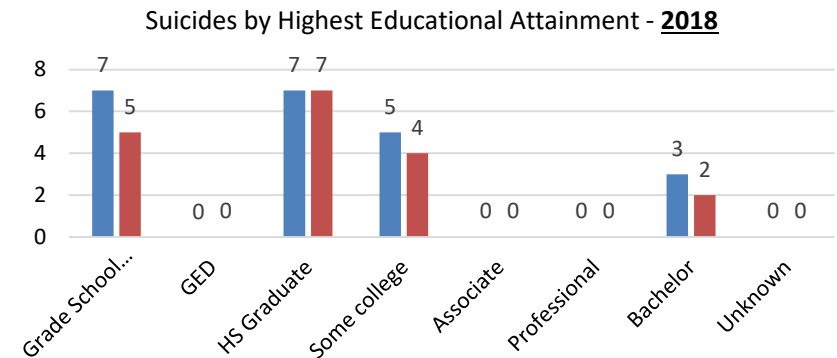
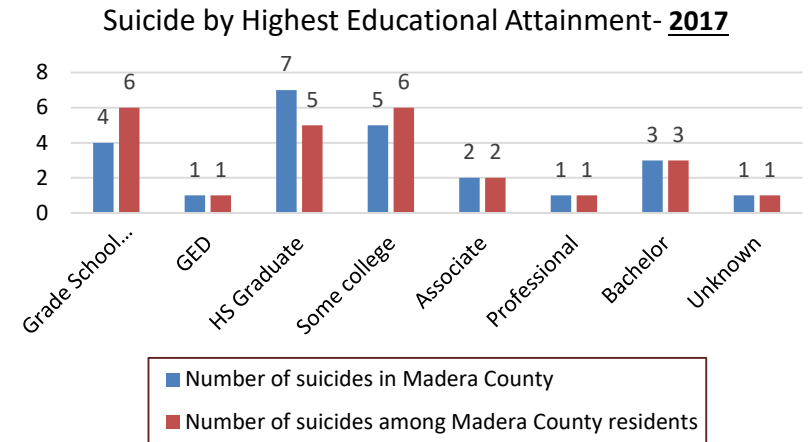
Race/ Ethnicity	2017		2018	
	Number of suicides in Madera County; N= 24	Number of suicides among Madera County residents; N=25	Number of suicides in Madera County; N=22	Number of suicides among Madera County residents; N=18
Non-Hispanic White	12 (50%)	14 (56%)	14 (64%)	10 (56%)
Hispanic/Latino	10 (42%)	9 (36%)	8 (36%)	8 (44%)
Mexican:	6 (25%)	6 (24%)	7 (32%)	7 (39%)
Other:	4 (17%)	3 (12%)	1 (4%)	1 (5%)
Native American/American Indian	1 (4%)	1 (4%)	0	0
African American	1 (4%)	1 (4%)	0	0



Lead. Protect. Empower.

# Suicide Counts by Education Attainment

Highest Level of Education	2017		2018	
	Number of suicides in Madera County; N= 24	Number of suicides among Madera County residents; N=25	Number of suicides in Madera County; N=22	Number of suicides among Madera County residents; N=18
Grade School without HS degree	4 (17%)	6 (24%)	7 (32%)	5 (28%)
GED	1 (4%)	1 (4%)	0	0 (39%)
HS Graduate	7 (29%)	5 (20%)	7 (32%)	7 (39%)
Some college	5 (21%)	6 (24%)	5 (23%)	4 (22%)
Associate	2 (8%)	2 (8%)	0	0
Professional	1 (4%)	1 (4%)	0	0
Bachelor	3 (13%)	3 (12%)	3 (14%)	2 (11%)
Unknown	1 (4%)	1 (4%)	0	0





# Suicide Counts by Immediate Cause of Death

Cause of death	2017		2018	
	Number of suicides in Madera County (%); N= 24	Number of suicides among Madera County residents (%); N=25	Number of suicides in Madera County (%); N=22	Number of suicides among Madera County residents (%); N=18
Asphyxia by Hanging	9 (38%)	8 (32%)	7 (32%)	4 (22%)
Stab Wound	0	0	1 (5%)	1 (6%)
Suffocation by Plastic bag over head with infused helium gas	1 (4%)	1 (4%)	0	0
Clonidine Toxicity	1 (4%)	1 (4%)	0	0
Incised Wounds	1 (4%)	1 (4%)	0	0
Gunshot	9 (38%)	8 (32%)	10 (45%)	11 (61%)
Mixed Drug and Ethanol Toxicity	2 (8%)	2 (8%)	0	0
Struck by a Train	1 (4%)	1 (4%)	3 (14%)	2 (11%)
Cardiac arrest (unknown cause)	0	0	1 (5%)	0



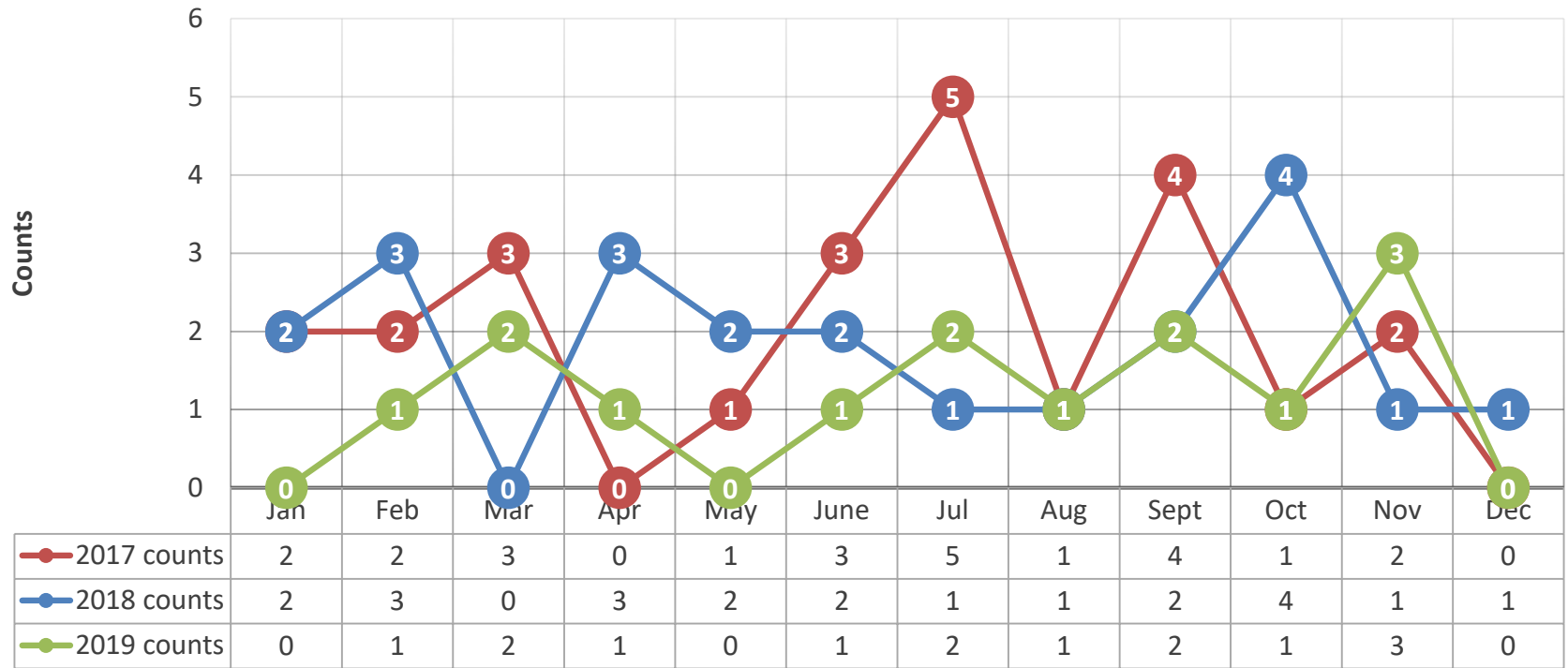
# Suicide Counts by Zip Codes

ZIP Code of Residence	2017		2018	
	Number of suicides in Madera County (%); N= 24	Number of suicides among Madera County residents (%); N=25	Number of suicides in Madera County (%); N=22	Number of suicides among Madera County residents (%); N=18
<p><u>2017</u>: 5.5 per 100,000</p> <p><u>2018</u>: 16.5 per 100,000</p>				
<p><u>2017</u>: 54.3 per 100,000</p> <p><u>2018</u>: N/A</p>	93610	1 (4%)	1 (4%)	3 (14%)
	93614	1 (4%)	1 (4%)	0
<p><u>2017</u>: 24.6 per 100,000</p> <p><u>2018</u>: 15.2 per 100,000</p>	93636	3 (13%)	3 (12%)	1 (5%)
	93637	4 (17%)	7 (28%)	2 (9%)
<p><u>2017</u>: 29.8 per 100,000</p> <p><u>2018</u>: N/A</p>	93638	9 (38%)	9 (36%)	7 (32%)
	93643	1 (4%)	1 (4%)	0
	93644	3 (13%)	3 (12%)	4 (18%)
<p><u>2017</u>: 106 per 100,000</p> <p><u>2018</u>: 141.4 per 100,000</p>	Other ZIP Codes outside of Madera County	2 (8%) (Fresno, Orange counties)	N/A	5 (Fresno, LA, Mariposa, Multnomah, and Platte counties)



# Suicide Counts by Month of the Year

Suicide Counts by Months



Lead. Protect. Empower.

# Key Findings

- Suicide rates fluctuated but there was a drastic increase between 2016-2017
  - Appeared to be decreasing in 2018
- In 2017, suicide counts were highest among 30-49 years old age group.
  - Among Madera County residents, highest among 40-49 years old
  - Among overall Madera County suicides, highest among 30-39 years old
- In 2018, suicide counts were sporadic for age groups
- Suicides were majority among males (77-89% across the 2 years)
- 50-65% of suicides were among non-Hispanic Whites followed by Hispanics
- Suicides appeared higher among individuals with lower educational attainment
- A large portion of method for suicide was gunshot wound, then hanging
  - Potential intervention : suicide by train



# Discussion

- What might be some of the priorities to address?
- Which groups do we want to focus on?
- With your expertise, why do you think this is the trend in Madera County?
  - What might be some organizations/ stakeholders that can intervene with the suicide trends?
  - What might be some targeted interventions for the high burden groups?
- Questions? Comments?



# For questions, please contact:

Minh Nguyen, MPH- Epidemiologist

Madera County Department of Public Health

Phone: (559) 675-7893

Email: [Minh.Nguyen@maderacounty.com](mailto:Minh.Nguyen@maderacounty.com)



**Lead. Protect. Empower.**